	Type <b>Guideline</b>	Product	
	Name <b>CAN Switch Configurator Getting Started Guide</b>	Project Code	
Author <b>HL</b>	Department <b>R&amp;D</b>	Date <b>2021-01-12</b>	
Checked	File Name <b>CAN Switch Configurator Getting Started Guide.odt</b>	Printed	
Approved	Revision	Classification <b>PUBLIC</b>	Page <b>1 (6)</b>
Copyright © TK Engineering Oy. All rights reserved. Reproduction, use or disclosure to third parties without express authority is strictly forbidden.			

Follow this guide to quickly start using the CAN Switch Configurator.

## Table of Contents

1	Install Program.....	1
2	Hardware configuration.....	2
3	Add License.....	2
4	Find Serial Number.....	4
4.1	Kvaser Hardware.....	4
4.2	Vector Hardware.....	4
4.3	Peak Hardware.....	4
4.4	CastorUSB.....	4
5	Troubleshooting.....	5
5.1	For Windows 8 or newer users.....	5
5.2	General.....	6
6	Uninstall Program.....	6
7	Legal Information.....	6
7.1	About This Manual.....	6
7.2	Trademarks.....	6
8	References.....	6

## 1 Install Program

After you have downloaded the zip package from our website, you need to following below procedures to install the configurator.

1. Unzip the install package into a separate folder.
2. Double click on the executable file to install Configurator. You need to be an administrator to do this.
3. **Install the latest driver of your CAN hardware on your PC if you haven't installed it yet.**
4. Plug your CAN hardware into your PC via USB and wait until Windows has installed the driver successfully
5. Configure the CAN hardware in `LocalHWInterface.xml` in CANOpenConfTool folder in public user's documents folder. [Read here for how to configure.](#)
6. Find the serial number of your CAN hardware and get the demo/full license from TKE. [Read here for how to find the serial number.](#)
7. In the same folder, add your license key to `License.txt` file. [Read here for how to add the license.](#)
8. Now ConfTool is ready to use.

## 2 Hardware configuration

Open the hardware configuration file **C:\Users\Public\Documents\CANopenConfTool\LocalHwlInterface.xml**

using Notepad or Notepad++

Navigate to the tag <hardwareconfig>

Find the tag <channelnr> under tag <channelnumber>

Find the tag <driver> under tag <hardwaredriver>

Set the parameter according to the CAN-USB hardware brand listed in below table.

CAN-USB brand	<channelnr>	<driver>
Kvaser	0	KVASERlibPlugin
Vector	1	VectorLibPlugin
Peak	0	PeakLibPlugin
TKE CastorUSB	0	CastorUSBPlugin

Save and close this file.

## 3 Add License

A special file “**C:\Users\Public\Documents\CANopenConfTool\License.txt**” is used to store the license keys. Open this file and paste the license key as a new row and save and close the file.

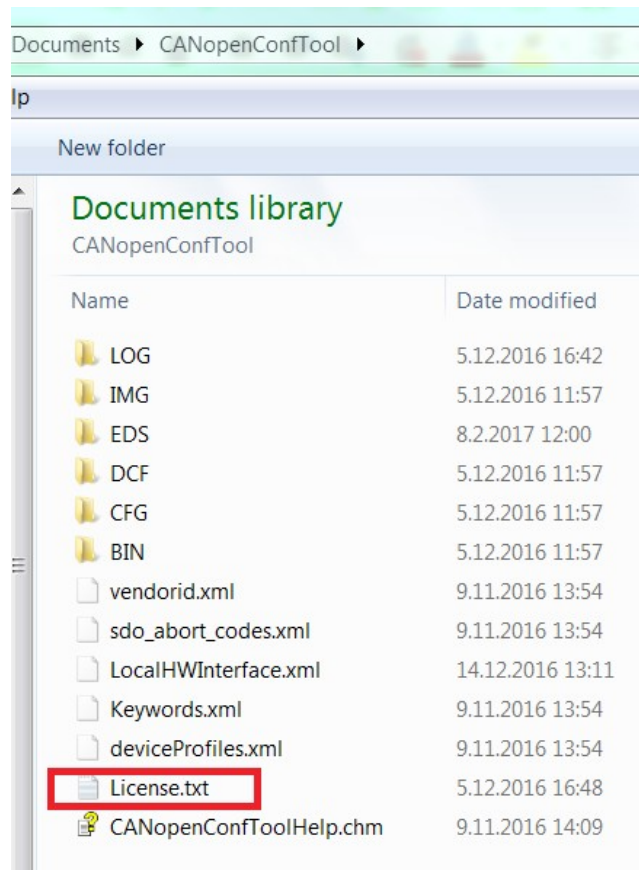


Figure 1: License File location

Correct key for a full licenses looks like:

1C55B7F3 C6EE9E70 B02D4BA6 C5388910 FFE2C64C

and for a demo license:

2E5D5B90 FD505805 4EA6839B 62DE807B F526D10C|1411503613|1017

Please remember that there are white spaces between the character groups, but there shall not exist leading or trailing white spaces or line breaks. Please also remember, that the key has been generated based on either PC-hardware or interface serial number.

If the program is just not working, please check following items before contacting TKE:

1. You have installed the device drivers. You may need administration rights for installing the drivers. If you have normal user rights, please contact your IT department.
2. Your CAN-interface is properly visible and operating as a USB-device. Sometimes you need to disconnect and connect again the interface hardware.
3. You have sent proper hardware serial number. Either get the serial number printed on the hardware or from the Hardware configuration tool made by the hardware vendor.
4. You have copied the license key without modifying it. The keys are case sensitive and leading or trailing line breaks and white spaces may be accidentally included.
5. You have re-started the program.

## 4 Find Serial Number

### 4.1 Kvaser Hardware

The serial number is printed on the Kvaser USB-CAN hardware. It can also be retrieved from Kvaser Hardware Configuration which is a tool installed when you install the driver.

Keep the Kvaser hardware plugged in to the PC when reading the serial number from the tool.

### 4.2 Vector Hardware

The serial number is printed on the Vector USB-CAN hardware. It can also be retrieved from Vector Hardware which is a tool installed when you install the driver.

Keep the Vector hardware plugged in to the PC when reading the serial number from the tool.

### 4.3 Peak Hardware

Some Peak USB-CAN hardware doesn't have serial number printed on the hardware. In order to get the serial number of the hardware, you need to follow below procedures.

After you have finished the configuration of LocalHwInterface.xml, plug in your Peak hardware to PC and open the program. Select a baudrate and scan the bus. The program will check the license and the logging area will report the serial number for the Peak hardware. For example, below image shows the serial number for a Peak USB-CAN hardware. Send this serial number to [info@tke.fi](mailto:info@tke.fi) for a trial license.

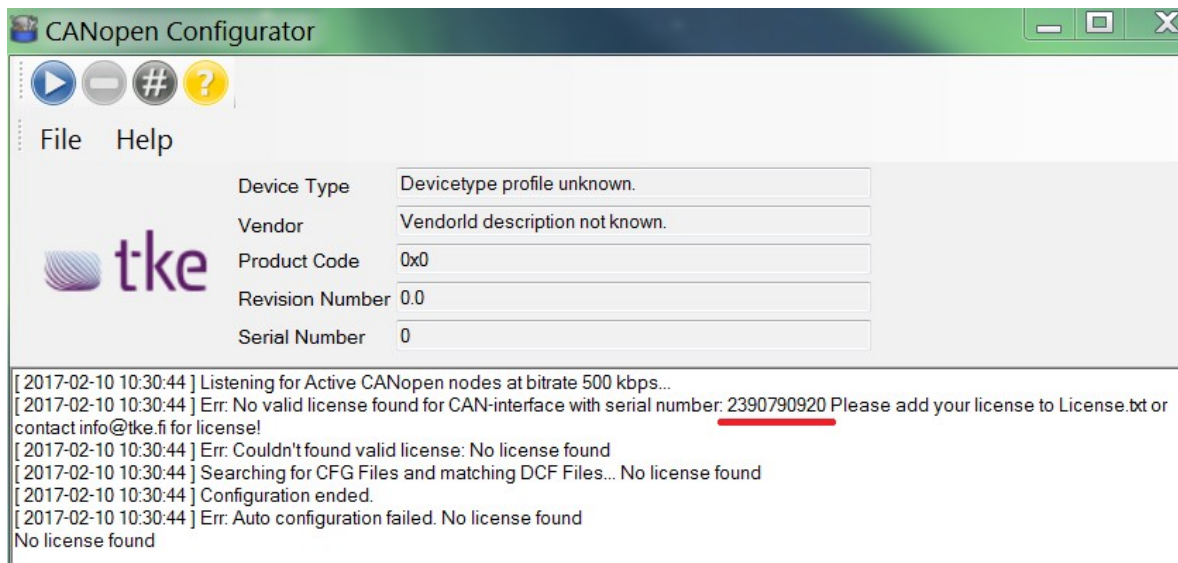


Figure 2: Find Peak hardware serial number

### 4.4 CastorUSB

CastorUSB is a USB-CAN hardware manufactured by TKE. Follow below procedure to find the serial number of your CastorUSB.

After you have finished the configuration of LocalHwInterface.xml, plug in your CastorUSB hardware to PC and open the program. Select a baudrate and scan the bus. The program

will check the license and the logging area will report the serial number for the CastorUSB hardware. For example, below image shows the serial number for a CastorUSB hardware. Send this serial number to [info@tke.fi](mailto:info@tke.fi) for a trail license.

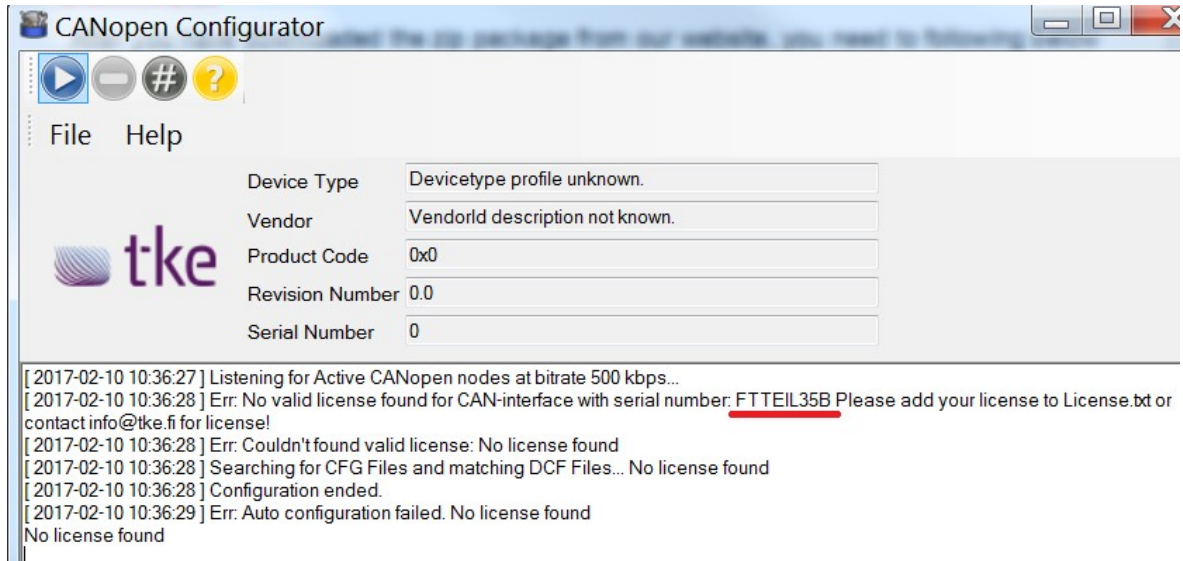


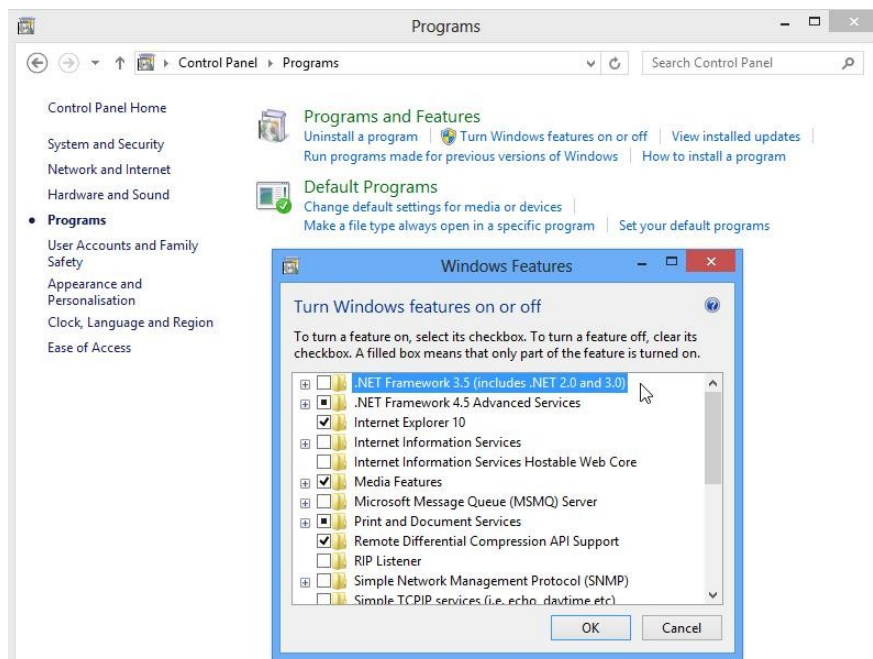
Figure 3: Find CastorUSB serial number

## 5 Troubleshooting

### 5.1 For Windows 8 or newer users

The program is targeted to .Net framework version 2.0. If you are Windows 8 or newer version users, you might need to enable .Net framework 3.5(includes 2.0).

To enable .Net framework 3.5 on Windows 8 or 8.1, please go to **Control Panel->Programs->Turn Windows features on or off**, and select the .NET Framework 3.5(includes .NET 2.0 and 3.0) check box, see below screen shot. Contact Windows support if installation fails.



## 5.2 General

- You need administrative rights to install the program.
- Make sure there is enough free disk space on the drive where you will install the program.
- Try using control panel to remove any previous version of the program before installing the new one.
- Contact [support@tke.fi](mailto:support@tke.fi) or your contact person at TKE for help with your Windows OS info(32 or 64 bit, edition type), program version and the error message you got when the installation fails.

## 6 Uninstall Program

Please go to Control Panel→ Programs→ Uninstall a program and uninstall the configurator.

## 7 Legal Information

### 7.1 About This Manual

This document is Copyright © 2021 TK Engineering Oy.

This document may not be reproduced without our prior written permission.

We believe that the information in this user guide was accurate at the time of printing. TK Engineering Oy cannot, however, assume responsibility for any errors or omissions in this document. The information in this document is subject to change without notice and should not be taken as a commitment by TK Engineering Oy.

### 7.2 Trademarks

All product names mentioned in this manual are registered or unregistered trademarks of their respective owners.

## 8 References