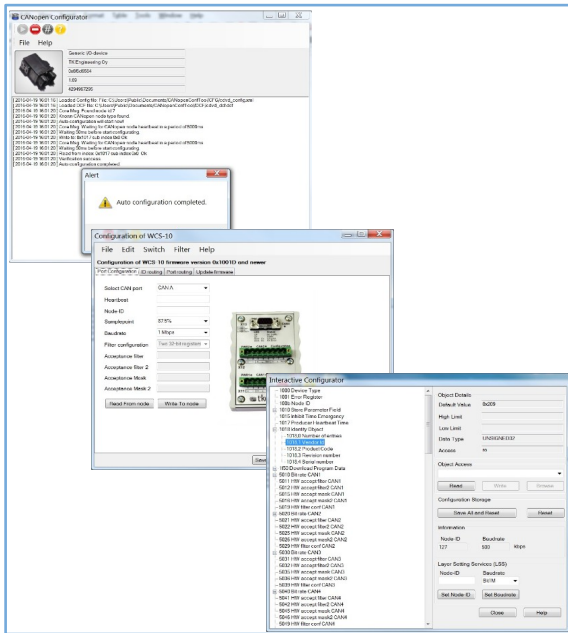


CANopen Configuration Tool

TK Engineering CANopen Configuration Tool is an advanced but easy-to-use tool for configuring CANopen nodes in development, production and service activities. The tool fills the gap of existing CANopen network design tool chain by offering simple and efficient DCF-file based configuration.



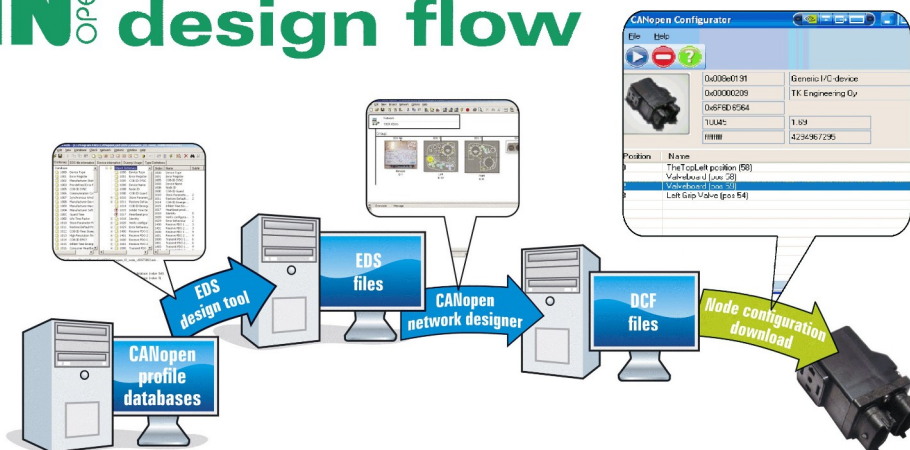
- Designed for efficient production line and service operations
- Simple automatic, semi-automatic and manual configuration modes
- Can be used as a slave of production management software
- Supports standardized CANopen design flow, design files (EDS and DCF) and services (SDO and LSS)
- Easy to setup and use
- Can control the power supply of node under configuration
- Supports CAN interfaces from Kvaser, Vector and Peak (support for other interfaces on request)
- Customized configuration window for TKE CAN Switches, the TCS-10 and the marine certified WCS-10
- Customized GUI support for specific nodes on request

CANopen Configuration Tool

CANopen ConfTool helps the user to configure nodes for the correct position by using XML configuration files together with standard DCF and EDS files. The logging function of the program creates a log file of the messages sent during the complete configuration process.

CANopen ConfTool can be used for automatic or interactive configuration of nodes. The interactive mode gives the user full access to the Object Dictionary of the node. The automatic configuration mode makes the configuration process fast and easy by only a few clicks.

CAN OPEN design flow



CANopen design flow with node configuration task highlighted